



VITA PUMPS

VDLF+VDH,VHP,VTHP
50Hz High Pressure Pump



VITA PUMPS

VITAFLOW INC.

Tel:+86-20-38012272

Fax:+86-20-38012301

Email:sales@vita-flow.com

sales@hytco.com

Website:www.vita-flow.com

subject to amendments



Vita Pumps, is a professional manufacturer which develops, manufactures and sells stainless steel multistage centrifugal pumps. The flow range up to 55m³/h, the head range up to 718m. Vita water pumps has professional designs and advanced techniques. Our products are being sold to more than 60 countries and regions around the world, such as: Southeast Asia, the Middle East, Europe, USA, and Latin America.

We supply VDLF+VDH, VHP and VTHP series high pressure pumps. The pumps are used in industrial water treatment, RO units, municipal water supply, farm irrigation, domestic water and fire water supply of high buildings, water purification, pharmaceutical industry, boiler, air-conditioning system, etc. Some of our pumps' advantages include: accurate performance, high quality standards, reasonable price, delivery on time.

The Vita brand is based on honesty and professionalism. Our working principle is: "Aim for perfect". In 2003, the factory passed the evaluation of ISO9001:2000 certification. In 2006, the factory passed the evaluation of ISO14000 environmental system certification. In 2007, the factory passed the evaluation of ISO100122003 measuring system certification. Our products have CE, TUV, ROHs, and UL certificates.

We warmly welcome you to visit our company, and would gladly to reply your enquiries, looking to find agents and business partners all over the world.



CONTENT

General Data

Performance scope	— — — — —	3
Product range	— — — — —	3
Working conditions	— — — — —	4
Applications	— — — — —	4
Connection	-----	4
Motor	— — — — —	4
Performance curve	— — — — —	4
Features	— — — — —	4
Pump	— — — — —	4
Definition of model	— — — — —	4
Sectional drawings	— — — — —	5
Max. working pressure	— — — — —	8
Min. inlet pressure	— — — — —	8

Technical Data

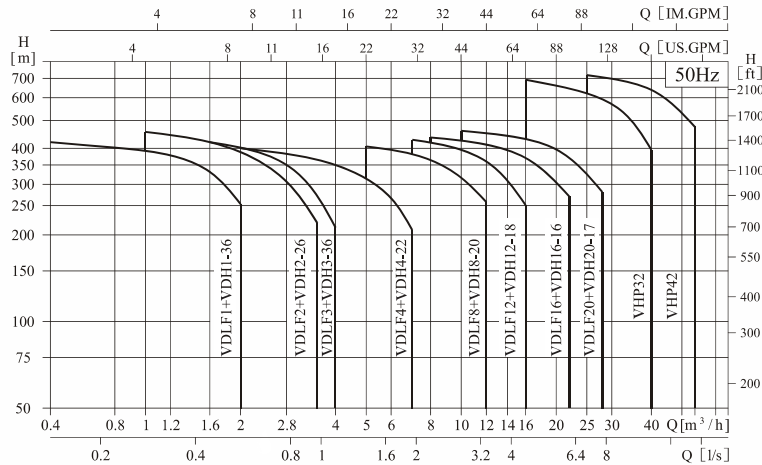
VDLF1+VDH1-36	— — — — —	9
VDLF2+VDH2-26	— — — — —	11
VDLF3+VDH3-36	— — — — —	13
VDLF4+VDH4-22	— — — — —	15
VDLF8+VDH8-20	— — — — —	17
VDLF12+VDH12-18	— — — — —	19
VDLF16+VDH16-16	— — — — —	21
VDLF20+VDH20-17	— — — — —	23
VHP32	— — — — —	25
VHP42	— — — — —	27
VTHP	— — — — —	29



reserves the rights to modify design and technical specifications

VITA PUMPS

Performance scope



Product range

Remark	VDLF1+VDH1-36	VDLF2+VDH2-26	VDLF3+VDH3-36	VDLF4+VDH4-22	VDLF8+VDH8-20	VDLF12+VDH12-18	VDLF16+VDH16-16	VDLF20+VDH20-17	VHP32	VHP42	VTHP20	VTHP42
Nominal flow [m ³ /h]	1	2	3	4	8	12	16	20	32	42	20	42
Nominal flow [l/s]	0,28	0,56	0,83	1,1	2,2	3,3	4,4	5,6	8,9	11,7	5,6	11,7
Flow range [m ³ /h]	0,4-2	1-3,5	1,2-4	1,5-7	5-12	7-16	8-22	10-28	16-40	25-55	5-22	20-45
Flow range [l/s]	0,11-0,56	0,28-0,97	0,33-1,1	0,42-1,9	1,4-3,3	1,9-4,4	2,2-6,1	2,8-7,8	4,4-11,1	6,9-15,3	1,4-5,6	5,6-12,5
Max. pressure [bar]	42	46	44	42	42	44	44	46	70	72	68	73
Power [kW]	2,57-4,4	3,37-6	3,37-6	4,37-8	8,25-15	12,5-22	17,2-30	19,6-37	37-74	55-110	60	104
Temp. [°C]	-15 → +120											
Max. efficiency [%]	42	44	52	56	61	62	64	69	73	75	73	75
Type												
Vertical	•	•	•	•	•	•	•	•				
Horizontal									•	•	•	•
Pipelines												
PJE coupling	•	•	•	•	•	•	•	•	•	•	•	•
System												
Two pumps in serial	•	•	•	•	•	•	•	•			•	•
Single pump or two pumps in serial									•	•		

Remark: Motor power is the total of two pumps in serial.

Working conditions

- Thin, clean, non flammable and non explosive liquid containing no solid granules and fibers.
- Liquid temperature:
Normal temperature type: -15°C ~ +70°C
Hot water type: -15°C ~ +120°C
- Ambient temperature: up to +40°C
- Altitude: up to 1000m

Applications

- Water treatment: Ultra filter system
- R/O system
- Booster system
- High pressure flushing system
- Water supply
- Sea water desalting R/O system (VTHP)

Connection

Inlet & outlet: PJE connection

Motor

- TEFC motor
- Protection class: IP55
- Insulation class: F
- Voltage: 50Hz, 3 × 380V-415V
3 × 220-240/380-415V
3 × 200-220/346-380V
1 × 220-230/240V

Performance curve

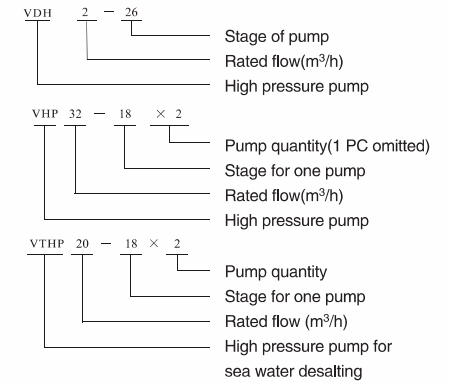
Following conditions are suitable for the performance curves shown below:

- All curves are based on the measured values of 50Hz: constant motor speed 2900rpm or 2950rpm.
- Curve tolerance in conformity with ISO9906 Annex A.
- Measurement is done with 20°C air free water, kinematic viscosity of 1mm²/sec.
- The operation of pump shall refer to the performance region indicated by the thickened curve to prevent overheating due to too small flow rate or overload of motor due to too large flow rate.

Features

- High pressure
- Y2 series standard motor
- Simple structure, reliable, high efficient, light and aesthetic
- Cartridge mechanical seal, easy for service.

Definition of model



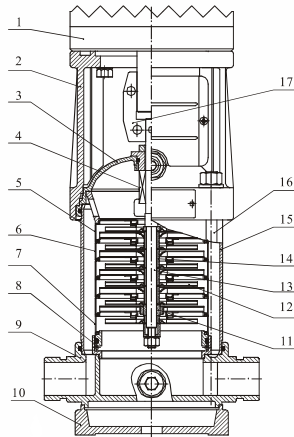
Pump I. VDH

- Two pumps (VDLF & VDH) in serial produce 46 bar high pressure.
- VDLF pump supplies water, VDH is specially Designed high pressure pump. The catalogue only gives technical information.
- VDH pump is non-priming vertical multistage centrifugal pump installed standard motor. Motor is coupled with pump shaft. Staybolts fix cylinder, wetting parts between pump head and inlet & outlet chamber. Inlet & outlet chamber and pump base are in the same line. Rotating direction is the reverse direction of water supply pump, chambers are reverse. The pumped liquid flowed reversely. The cylinder and mechanical seal only bear the outlet pressure of water supply pump, increased the reliability.

Pump II VHP, VTHP

- Two pumps assembled to pump sets in serial or only one pump, pump is coupled with standard motor by rigid coupling.
- Pump is installed horizontally.
- Impellers are installed back to back, so as to balance the big trust force of the pump.
- For the wet parts, for VHP model, it is SS304 or SS316; for VTHP, for precision molding part, the material is duplex stainless steel, for sectional material part, the material is super austenitic stainless steel.

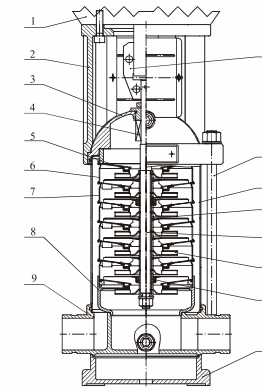
Sectional drawing VDH1,2,3,4



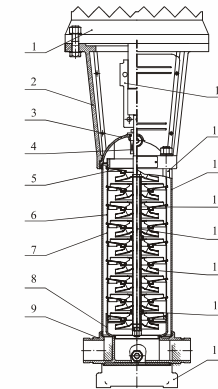
Material VDH1,2,3,4

NO	Name	Material	AISI/ASTM	NO	Name	Material	AISI/ASTM
1	Motor			9	Inlet and outlet chamber	Stainless steel	AISI304
2	Pump head	Cast iron	ASTM 80-55-06	10	Base plate	Cast iron	
3	Lining			11	Bearing	Tungsten carbide	
4	Mechanical seal			12	Impeller	Stainless steel	AISI304
5	Top diffuser	Stainless steel	AISI304	13	Shaft	Stainless steel	AISI304 AISI316L
6	Diffuser	Stainless steel	AISI304	14	Impeller sleeve	Stainless steel	AISI304
7	Support diffuser	Stainless steel	AISI304	15	Cylinder	Stainless steel	AISI304
8	Inducer	Stainless steel	AISI304	16	Staybolt	Stainless steel	
				17	Coupling	Carbon steel	

Sectional drawing VDH8,12,16,20



VDH8

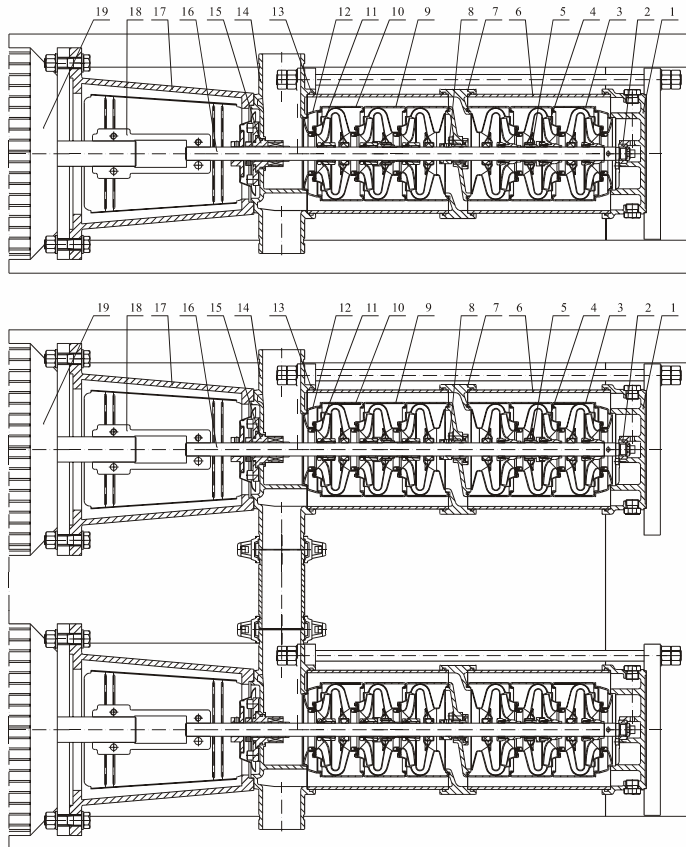


VDH12,16,20

Material VDH8,12,16,20

NO	Name	Material	AISI/ASTM	NO	Name	Material	AISI/ASTM
1	Motor			9	Inlet and outlet chamber	Stainless steel	AISI304
2	Pump head	Cast iron	ASTM 80-55-06	10	Base plate	Cast iron	
3	Lining			11	Bearing	Tungsten carbide	
4	Mechanical seal			12	Impeller	Stainless steel	AISI304
5	Top diffuser	Stainless steel	AISI304	13	Shaft	Stainless steel	AISI304 AISI316L
6	Diffuser	Stainless steel	AISI304	14	Impeller sleeve	Stainless steel	AISI304
7	Support diffuser	Stainless steel	AISI304	15	Cylinder	Stainless steel	AISI304
8	Inducer	Stainless steel	AISI304	16	Staybolt	Stainless steel	
				17	Coupling	Carbon steel	

Sectional drawing



- | | | | | |
|--------------------|------------------------------|-----------------------------|------------------------------|--------------|
| 01. Base | 05. Intermediate bearing | 09. Support reverse chamber | 13. Oring | 17. Bracket |
| 02. Bottom bearing | 06. Outer sleeve | 10. Reverse chamber | 14. Inlet and outlet chamber | 18. Coupling |
| 03. Chamber | 07. Exchange chamber | 11. Reverse impeller | 15. Mechanical seal | 19. Motor |
| 04. Impeller | 08. Exchange chamber bearing | 12. Inducer | 16. Pump shaft | |

Max. working pressure

01. VDH1,2,3,4,8,12,16,20:50bar
02. VHP, VTHP:75bar

Minimum inlet pressure NPSH

01. VDH:VDH1,2,3,4,8,12,16,20:0.5bar
02. VDLF, VHP, VTHP:

In case that the pressure in pump is lower than the steam pressure used to convey liquid, the cavitations will occur. To avoid cavitations, a minimum pressure at the inlet side of the pump shall be guaranteed.

The maximum suction stroke can be calculated with following formula:

$$H = P_b \times 10.2 - NPSH - H_f - H_v - H_s$$

P_b = atmosphere pressure [bar]

(can be set as 1 bar)

In a closed system, P_b means system pressure [bar]

NPSH = Net positive suction head [m]

(It can be read out from the point of possible max. Flow rate shown on NPSH curve)

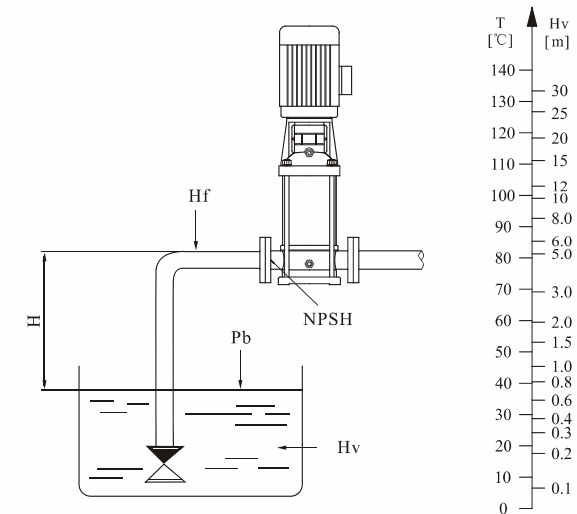
H_f = Pipeline loss at the inlet [m]

H_v = Steam pressure [m]

H_s = Safety margin = Minimum 0.5m delivery head

If the calculated result H is positive, the pump may run under the max. Suction stroke H .

In case the calculated result H is negative, a delivery head of min. Inlet pressure is necessary.

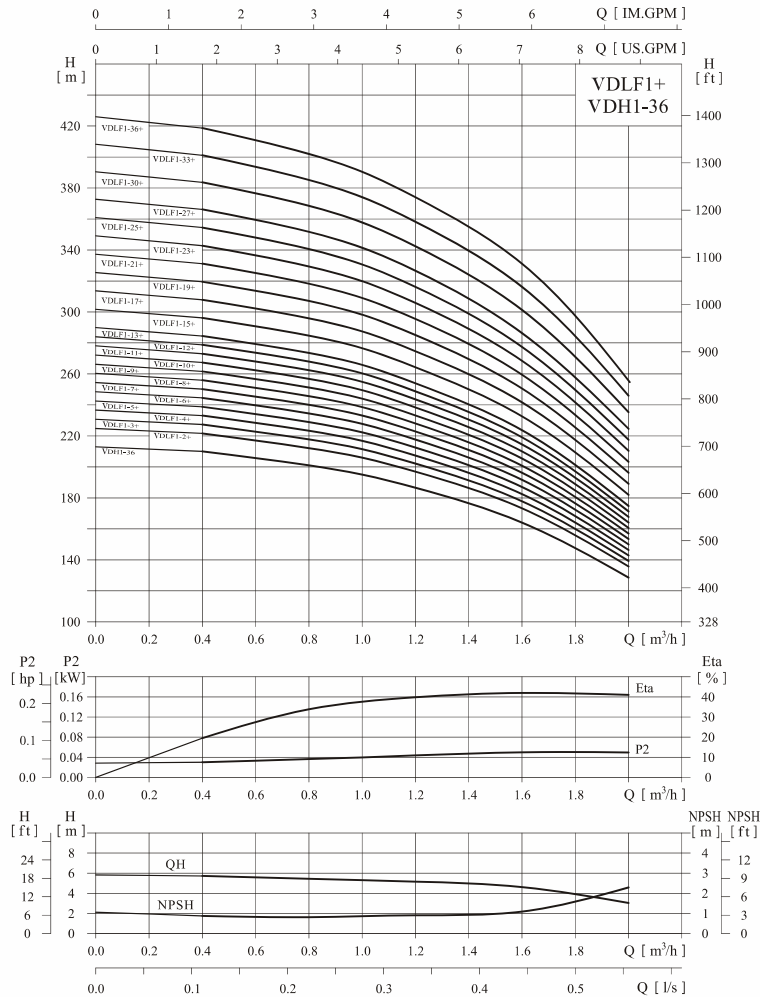




reserves the rights to modify design and technical specifications

Performance curve

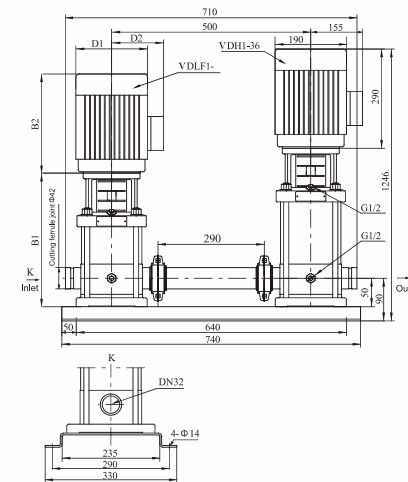
ISO9906 Annex A 2900rpm



Performance table

Model	Driving motor (kW)	Q (m³/h)	0.4	0.6	0.8	1.0	1.2	1.4	1.6	1.8	2.0
VDLF1-2+VDH1-36	0,37+2,2	H (m)	221	216,5	211	205,5	197	186,5	175	157,5	136
VDLF1-3+VDH1-36	0,37+2,2		227	222	216,5	211	202,5	192	180	162	139
VDLF1-4+VDH1-36	0,37+2,2		232	227,5	222	216,5	207,5	197	184	166	143
VDLF1-5+VDH1-36	0,37+2,2		238	233,6	228	222	21,3	202	189	170	147
VDLF1-6+VDH1-36	0,37+2,2		244	239,5	234	227,5	219	207	193	174	150
VDLF1-7+VDH1-36	0,37+2,2		250	245	239,5	233	224	212	198	178	154
VDLF1-8+VDH1-36	0,55+2,2		256	251	245	239	229	217	203	182	157
VDLF1-9+VDH1-36	0,55+2,2		262	257	251	245	235	222	208	187	160
VDLF1-10+VDH1-36	0,55+2,2		268	263	257	251	240	227	213	191	163
VDLF1-11+VDH1-36	0,55+2,2		274	269	262	255	245	232	217	195	167
VDLF1-12+VDH1-36	0,75+2,2		280	275	268	261	250	237	222	199	171
VDLF1-13+VDH1-36	0,75+2,2		286	281	274	267	255	242	227	203	174
VDLF1-15+VDH1-36	0,75+2,2		297	292	285	278	265	252	236	211	182
VDLF1-17+VDH1-36	1,1+2,2		309	303	296	289	275	262	245	219	189
VDLF1-19+VDH1-36	1,1+2,2		321	314	307	300	285	272	254	227	196
VDLF1-21+VDH1-36	1,1+2,2		332	326	319	311	296	282	263	235	202
VDLF1-23+VDH1-36	1,1+2,2		345	337	330	322	307	292	272	244	209
VDLF1-25+VDH1-36	1,5+2,2		357	349	342	333	317	302	281	252	216
VDLF1-27+VDH1-36	1,5+2,2		369	361	354	344	327	312	290	260	222
VDLF1-30+VDH1-36	1,5+2,2		386	379	370	360	343	326	304	272	233
VDLF1-33+VDH1-36	2,2+2,2		404	396	387	377	359	341	319	285	245
VDLF1-36+VDH1-36	2,2+2,2		422	414	404	394	376	357	334	299	257

Installation sketch



Size and weight

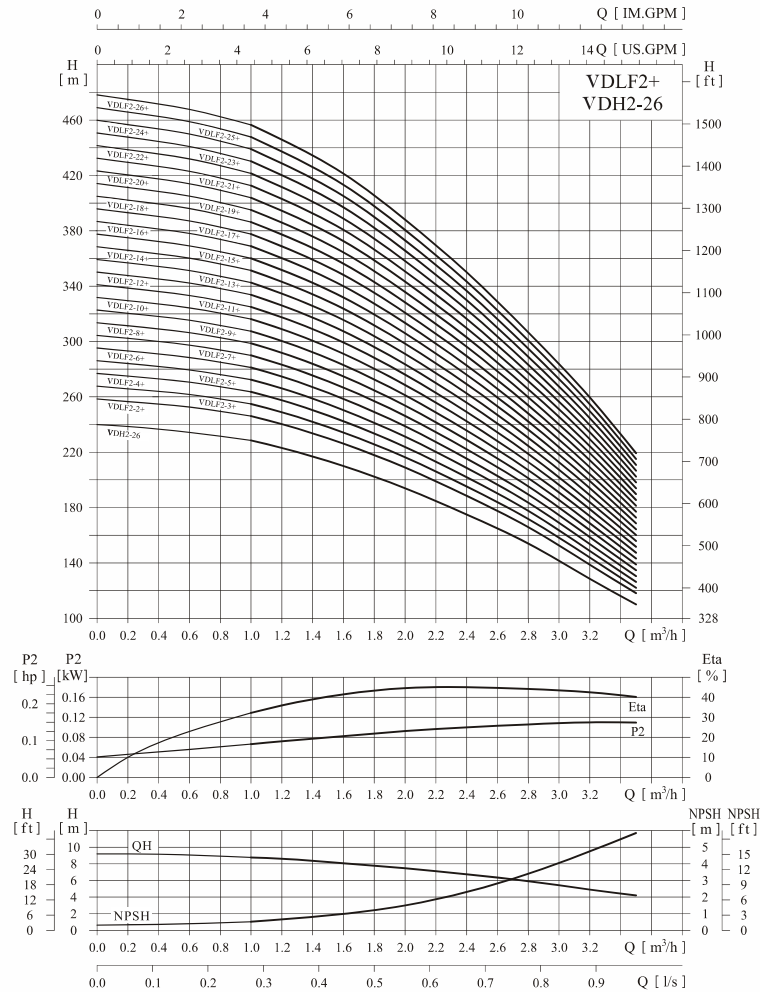
Model	Size (mm)					Weight (kg)
	B1	B2	B1+B2	D1	D2	
VDLF1-2+VDH1-36	233	210	443	148	117	81
VDLF1-3+VDH1-36	251	210	461	148	117	81
VDLF1-4+VDH1-36	269	210	479	148	117	81
VDLF1-5+VDH1-36	287	210	497	148	117	81
VDLF1-6+VDH1-36	305	210	515	148	117	81
VDLF1-7+VDH1-36	323	210	533	148	117	81
VDLF1-8+VDH1-36	341	210	551	148	117	83
VDLF1-9+VDH1-36	359	210	569	148	117	83
VDLF1-10+VDH1-36	377	210	587	148	117	83
VDLF1-11+VDH1-36	395	210	605	148	117	83
VDLF1-12+VDH1-36	423	245	668	170	142	86
VDLF1-13+VDH1-36	441	245	686	170	142	86
VDLF1-15+VDH1-36	477	245	722	170	142	86
VDLF1-17+VDH1-36	513	245	758	170	142	89
VDLF1-19+VDH1-36	549	245	794	170	142	89
VDLF1-21+VDH1-36	585	245	830	170	142	91
VDLF1-23+VDH1-36	621	245	866	170	142	94
VDLF1-25+VDH1-36	667	290	957	190	155	101
VDLF1-27+VDH1-36	703	290	993	190	155	101
VDLF1-30+VDH1-36	757	290	1047	190	155	101
VDLF1-33+VDH1-36	811	290	1101	190	155	106
VDLF1-36+VDH1-36	865	290	1155	190	155	106



reserves the rights to modify design and technical specifications

Performance curve

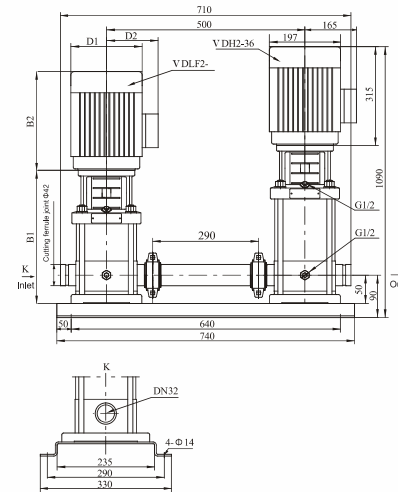
ISO9906 Annex A 2900rpm



Performance table

Model	Driving motor (kW)	Q (m³/h)	1.0	1.2	1.6	2.0	2.4	2.8	3.2	3.5
VDLF2-2+VDH2-26	0,37+3,0	H (m)	245	238	224	207	186	163	136	116
VDLF2-3+VDH2-26	0,37+3,0		254	247	232	214	193	169	141	120
VDLF2-4+VDH2-26	0,55+3,0		263	256	241	222	199	175	146	124
VDLF2-5+VDH2-26	0,55+3,0		272	264	248	229	206	181	150	128
VDLF2-6+VDH2-26	0,75+3,0		280	273	258	237	213	187	156	132
VDLF2-7+VDH2-26	0,75+3,0		290	282	265	244	220	192	161	136
VDLF2-9+VDH2-26	1,1+3,0		307	299	281	259	234	205	171	145
VDLF2-11+VDH2-26	1,1+3,0		325	316	297	274	246	215	180	152
VDLF2-13+VDH2-26	1,5+3,0		343	335	314	290	262	229	191	160
VDLF2-15+VDH2-26	1,5+3,0		361	351	331	304	273	241	199	168
VDLF2-18+VDH2-26	2,2+3,0		388	378	356	328	294	259	217	184
VDLF2-22+VDH2-26	2,2+3,0		424	413	388	357	321	281	236	198
VDLF2-26+VDH2-26	3,0+3,0		459	449	422	390	352	309	256	218

Installation sketch



Size and weight

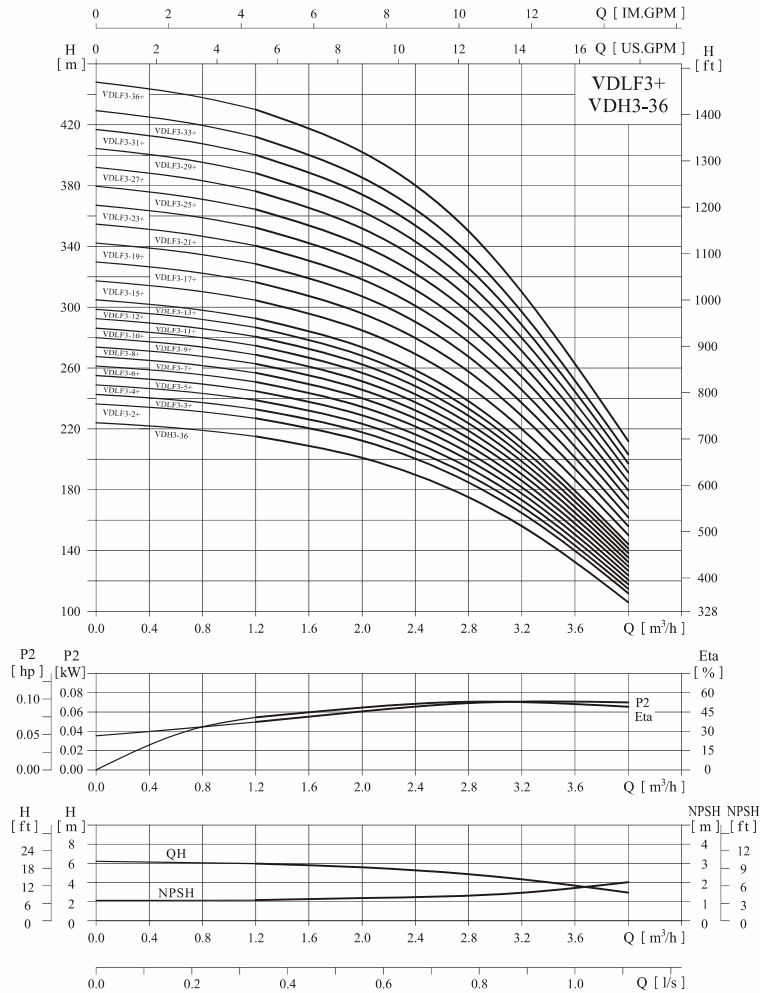
Model	Size (mm)					Weight (kg)
	B1	B2	B1+B2	D1	D2	
VDLF2-2+VDH2-26	233	210	443	148	117	86
VDLF2-3+VDH2-26	251	210	461	148	117	86
VDLF2-4+VDH2-26	269	210	479	148	117	86
VDLF2-5+VDH2-26	287	210	497	148	117	86
VDLF2-6+VDH2-26	315	245	560	170	142	91
VDLF2-7+VDH2-26	333	245	578	170	142	91
VDLF2-9+VDH2-26	369	245	614	170	142	96
VDLF2-11+VDH2-26	405	245	650	170	142	96
VDLF2-13+VDH2-26	451	290	741	190	155	101
VDLF2-15+VDH2-26	487	290	777	190	155	101
VDLF2-18+VDH2-26	541	290	831	190	155	106
VDLF2-22+VDH2-26	613	290	903	190	155	111
VDLF2-26+VDH2-26	695	315	1010	197	165	116



reserves the rights to modify design and technical specifications

Performance curve

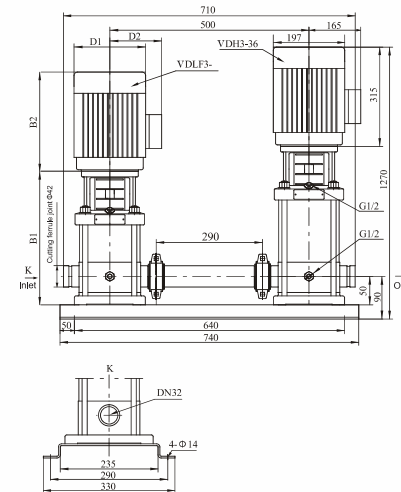
ISO9906 Annex A 2900rpm



Performance table

Model	Driving motor (kW)	Q (m³/h)	1.2	1.6	2.0	2.4	2.8	3.0	3.2	3.6	40
VDLF3-2+VDH3-36	0,37+3,0	H (m)	226,5	219,5	211	198,5	184	173	162	138	111
VDLF3-3+VDH3-36	0,37+3,0		233	226,5	217,5	204,5	189	178	167	142	114
VDLF3-4+VDH3-36	0,37+3,0		239	232	223	2095	194	183	172	146	117
VDLF3-5+VDH3-36	0,37+3,0		245	238	229	215	199	187	176	150	121
VDLF3-6+VDH3-36	0,55+3,0		250	243	234	220	204	192	181	154	124
VDLF3-7+VDH3-36	0,55+3,0		257	249	239	225	208	196	185	158	127
VDLF3-8+VDH3-36	0,75+3,0		263	255	245	231	213	201	189	162	130
VDLF3-9+VDH3-36	0,75+3,0		269	261	251	236	219	206	194	166	133
VDLF3-10+VDH3-36	0,75+3,0		275	267	257	242	224	211	199	170	136
VDLF3-11+VDH3-36	1,1+3,0		281	272	261	246	228	215	203	173	139
VDLF3-12+VDH3-36	1,1+3,0		287	278	267	251	232	219	206	176	142
VDLF3-13+VDH3-36	1,1+3,0		292	284	273	257	238	224	211	180	145
VDLF3-14+VDH3-36	1,1+3,0		304	296	284	267	247	233	220	188	151
VDLF3-15+VDH3-36	1,5+3,0		317	308	296	278	257	243	229	195	157
VDLF3-16+VDH3-36	1,5+3,0		329	320	307	288	266	252	237	203	163
VDLF3-17+VDH3-36	1,5+3,0		342	332	319	300	276	262	245	210	169
VDLF3-18+VDH3-36	2,2+3,0		354	343	330	310	286	271	254	217	175
VDLF3-19+VDH3-36	2,2+3,0		365	355	341	319	296	280	263	225	181
VDLF3-20+VDH3-36	2,2+3,0		378	367	352	331	306	288	271	232	187
VDLF3-21+VDH3-36	2,2+3,0		389	378	363	341	316	297	280	240	193
VDLF3-22+VDH3-36	3,0+3,0		401	390	375	353	327	306	289	247	199
VDLF3-23+VDH3-36	3,0+3,0		413	402	387	364	337	315	299	256	205
VDLF3-24+VDH3-36	3,0+3,0		432	420	404	380	352	332	313	268	214

Installation sketch



Size and weight

Model	Size (mm)					Weight (kg)
	B1	B2	B1+B2	D1	D2	
VDLF3-2+VDH3-36	233	210	443	148	117	86
VDLF3-3+VDH3-36	251	210	461	148	117	86
VDLF3-4+VDH3-36	269	210	479	148	117	86
VDLF3-5+VDH3-36	287	210	497	148	117	86
VDLF3-6+VDH3-36	305	210	515	148	117	88
VDLF3-7+VDH3-36	323	210	533	148	117	88
VDLF3-8+VDH3-36	351	245	596	170	142	88
VDLF3-9+VDH3-36	369	245	614	170	142	88
VDLF3-10+VDH3-36	387	245	632	170	142	88
VDLF3-11+VDH3-36	405	245	650	170	142	91
VDLF3-12+VDH3-36	423	245	668	170	142	91
VDLF3-13+VDH3-36	441	245	684	170	142	91
VDLF3-15+VDH3-36	477	245	722	170	142	91
VDLF3-17+VDH3-36	523	290	813	190	155	96
VDLF3-19+VDH3-36	559	290	849	190	155	101
VDLF3-21+VDH3-36	595	290	885	190	155	101
VDLF3-23+VDH3-36	631	290	921	190	155	106
VDLF3-25+VDH3-36	667	290	957	190	155	106
VDLF3-27+VDH3-36	703	290	993	190	155	106
VDLF3-29+VDH3-36	739	290	1029	190	155	106
VDLF3-31+VDH3-36	785	315	1109	197	165	111
VDLF3-33+VDH3-36	821	315	1136	197	165	116
VDLF3-36+VDH3-36	875	315	1190	197	165	116

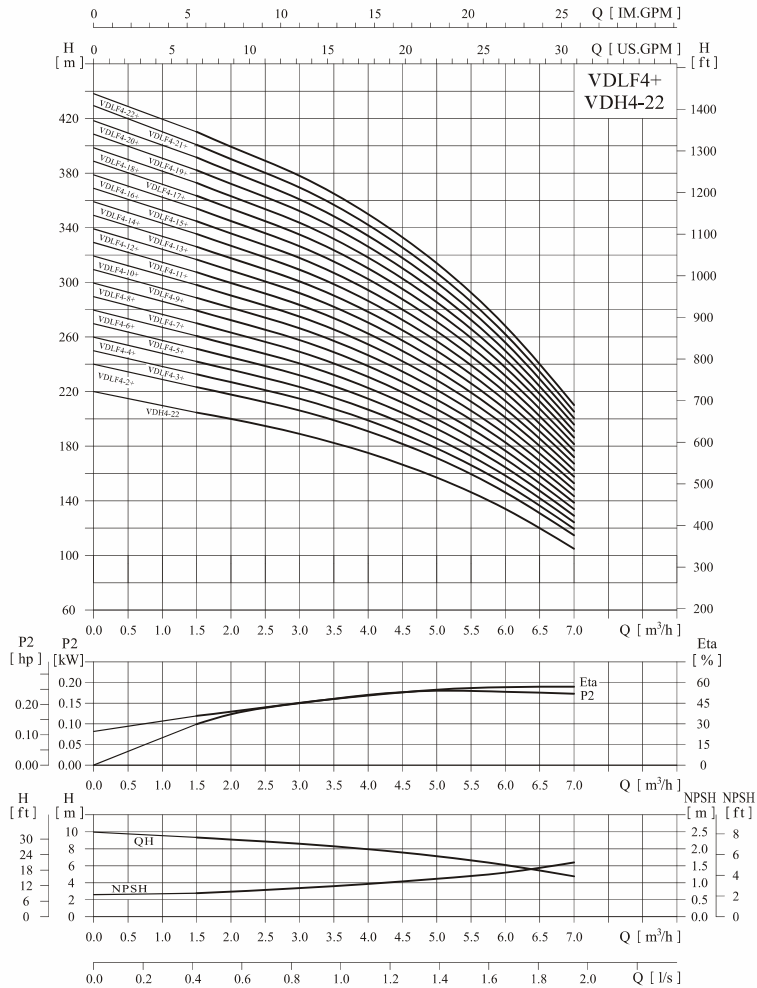


reserves the rights to modify design and technical specifications

VITA PUMPS

Performance curve

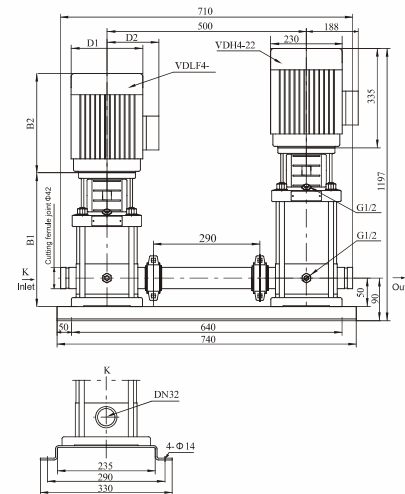
ISO9906 Annex A 2900rpm



Performance table

Model	Driving motor (kW)	Q (m³/h)	1.5	2.0	3.0	4.0	5.0	6.0	7.0
VDLF4-2+VDH4-22	0,37+4,0	H (m)	221	215	205	190	170	144	111
VDLF4-3+VDH4-22	0,55+4,0		230	224	214	199	177	152	116
VDLF4-4+VDH4-22	0,75+4,0		240	233	222	207	184	158	122
VDLF4-5+VDH4-22	11+4,0		240	242	231	215	191	165	126
VDLF4-6+VDH4-22	11+4,0		258	251	240	223	198	171	131
VDLF4-7+VDH4-22	1,5+4,0		268	260	249	231	205	177	136
VDLF4-8+VDH4-22	1,5+4,0		276	269	258	239	212	184	141
VDLF4-10+VDH4-22	2,2+4,0		298	287	275	256	228	196	151
VDLF4-12+VDH4-22	2,2+4,0		316	305	292	270	242	209	161
VDLF4-14+VDH4-22	3,0+4,0		338	323	310	287	258	223	171
VDLF4-16+VDH4-22	3,0+4,0		354	341	328	304	272	235	181
VDLF4-19+VDH4-22	4,0+4,0		385	368	356	328	294	256	196
VDLF4-22+VDH4-22	4,0+4,0		413	397	380	353	317	272	211

Installation sketch



Size and weight

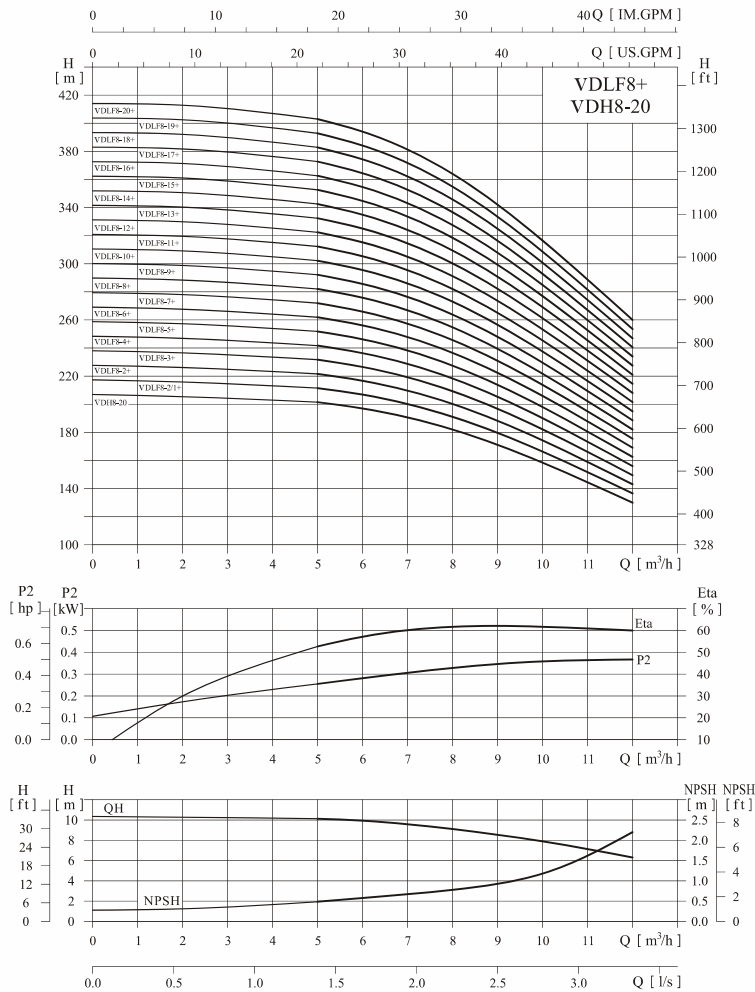
Model	Size (mm)					Weight (kg)
	B1	B2	B1+B2	D1	D2	
VDLF4-2+VDH4-22	251	210	461	148	117	86
VDLF4-3+VDH4-22	278	210	488	148	117	86
VDLF4-4+VDH4-22	315	245	560	170	142	86
VDLF4-5+VDH4-22	342	245	587	170	142	91
VDLF4-6+VDH4-22	369	245	614	170	142	91
VDLF4-7+VDH4-22	406	290	696	190	155	96
VDLF4-8+VDH4-22	433	290	723	190	155	96
VDLF4-10+VDH4-22	487	290	777	190	155	96
VDLF4-12+VDH4-22	541	290	831	190	155	101
VDLF4-14+VDH4-22	605	315	920	197	165	101
VDLF4-16+VDH4-22	659	315	974	197	165	106
VDLF4-19+VDH4-22	740	315	1055	230	188	111
VDLF4-22+VDH4-22	821	335	1156	230	188	116



reserves the rights to modify design and technical specifications

Performance curve

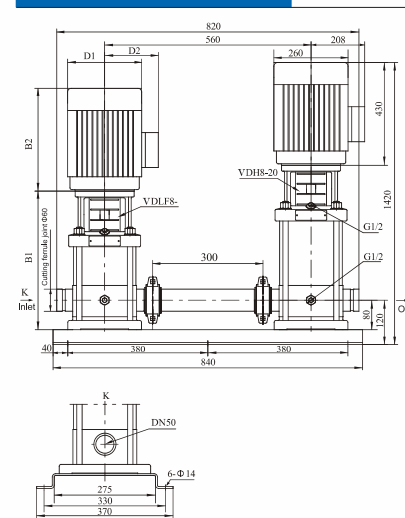
ISO9906 Annex A 2900rpm



Performance table

Model	Driving motor (kW)	Q (m³/h)	5	6	7	8	9	10	11	12
VDLF8-2/1+VDH8-20	0,75+7,5	H (m)	211	204,5	197,3	189	177,5	164	149	134
VDLF8-2+VDH8-20	0,75+7,5		221	214,5	207	198	186	172	156	141
VDLF8-3+VDH8-20	1,1+7,5		231	224,5	216,5	207	194	180	163	147
VDLF8-4+VDH8-20	1,5+7,5		242	234,5	226	216	203	188	170	154
VDLF8-5+VDH8-20	2,2+7,5		253	245	236	225	211	196	178	160
VDLF8-6+VDH8-20	2,2+7,5		263	255	245	234	220	204	185	167
VDLF8-8+VDH8-20	3,0+7,5		284	275	265	253	238	221	200	180
VDLF8-10+VDH8-20	4,0+7,5		305	295	285	272	256	237	215	193
VDLF8-12+VDH8-20	4,0+7,5		325	315	304	291	273	248	229	206
VDLF8-14+VDH8-20	5,5+7,5		346	336	324	310	291	269	244	220
VDLF8-16+VDH8-20	5,5+7,5		367	356	344	328	308	286	260	234
VDLF8-18+VDH8-20	7,5+7,5		388	377	363	347	326	302	276	248
VDLF8-20+VDH8-20	7,5+7,5		409	397	383	366	344	319	292	263

Installation sketch



Size and weight

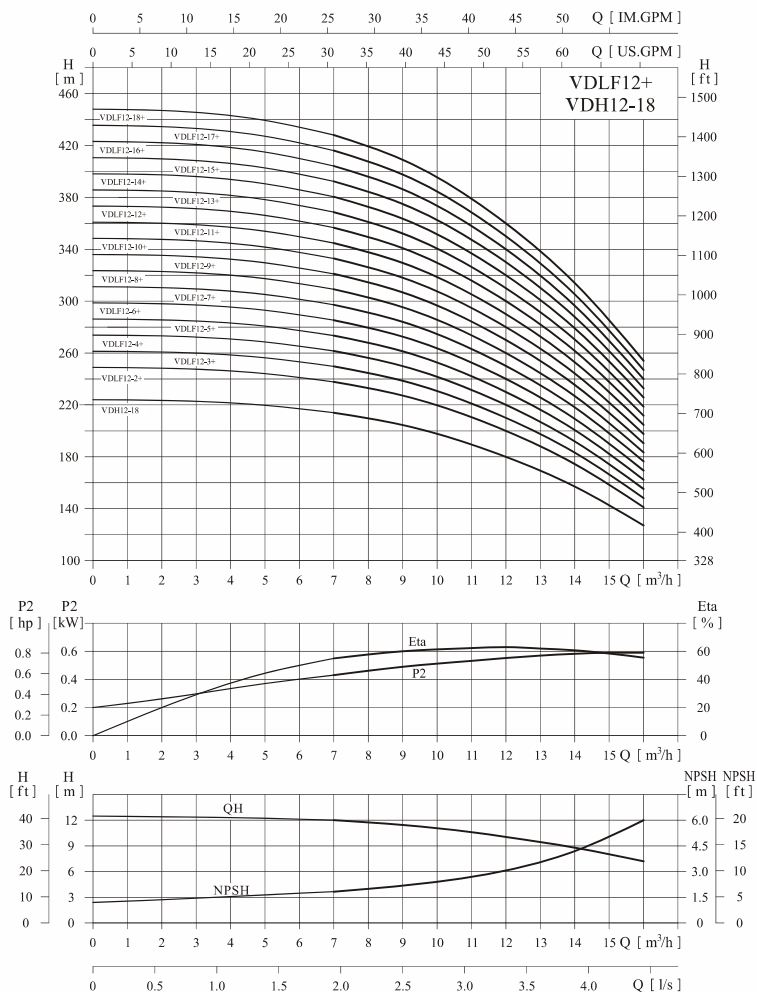
Model	Size (mm)					Weight (kg)
	B1	B2	B1+B2	D1	D2	
VDLF8-2/1+VDH8-20	347	245	592	170	142	136
VDLF8-2+VDH8-20	347	245	592	170	142	136
VDLF8-3+VDH8-20	377	245	622	170	142	146
VDLF8-4+VDH8-20	417	290	707	190	155	146
VDLF8-5+VDH8-20	447	290	737	190	155	156
VDLF8-6+VDH8-20	477	290	767	190	155	156
VDLF8-8+VDH8-20	547	315	862	197	165	161
VDLF8-10+VDH8-20	607	335	942	230	188	171
VDLF8-12+VDH8-20	667	335	1002	230	188	171
VDLF8-14+VDH8-20	747	430	1177	260	208	196
VDLF8-16+VDH8-20	807	430	1237	260	208	196
VDLF8-18+VDH8-20	867	430	1297	260	208	206
VDLF8-20+VDH8-20	927	430	1357	260	208	206



reserves the rights to modify design and technical specifications

Performance curve

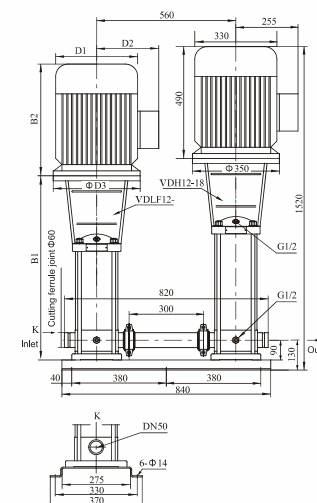
ISO9906 Annex A 2900rpm



Performance table

Model	Driving motor (kW)	Q (m³/h)	7	8	9	10	11	12	13	14	15	16
VDLF 12-2+VDH 12-18	1,5+11	H (m)	237,5	232	225,5	218	210	200	187,5	174	157,5	141
VDLF 12-3+VDH 12-18	2,2+11		249,5	244	237	229	220,5	210	197	183	165,5	148
VDLF 12-4+VDH 12-18	3+11		261	255	248	240	231	220	206	191	173	155
VDLF 12-5+VDH 12-18	3+11		273,5	267	250,5	251	241,5	230	215,5	200	181	162
VDLF 12-6+VDH 12-18	4+11		285,5	279	271	262	252	240	225	209	189	169
VDLF 12-7+VDH 12-18	5,5+11		297 5	291	282,5	273	262,5	250	234,5	218	197	176
VDLF 12-8+VDH 12-18	5,5+11		309,5	303	294	284	273	260	244	227	205	183
VDLF 12-9+VDH 12-18	5,5+11		322	315	306	296	284,5	271	254	236	213,5	191
VDLF 12-10+VDH12-18	7,5+11		334	327	317,5	307	295	281	263,5	245	222	199
VDLF 12-12+VDH12-18	7,5+11		357,5	350	340	329	316	301	282,5	263	238	213
VDLF 12-14+VDH12-18	11+11		382	374	363	351	337	321	301,5	281	254	227
VDLF 12-16+VDH12-18	11+11		406,5	398	386,5	374	359	342	321	299	270,5	242
VDLF 12-18+VDH12-18	11+11		431	422	410,5	398	381,5	363	340,5	317	287	257

Installation sketch



Size and weight

Model	Size (mm)						Weight (kg)
	B1	B2	B1+B2	D1	D2	D3	
VDLF12-2+VDH 12-18	367	290	657	190	155	145	210
VDLF12-3+VDH12-18	397	290	687	190	155	145	213
VDLF12-4+VDH 12-18	437	315	752	197	165	160	220
VDLF12-5+VDH 12-18	467	315	782	197	165	160	221
VDLF12-6+VDH 12-18	497	335	832	230	188	160	231
VDLF12-7+VDH12-18	547	430	977	260	208	200	249
VDLF12-8+VDH12-18	577	430	1007	260	208	200	249
VDLF12-9+VDH12-18	607	430	1037	260	208	200	251
VDLF12-10+VDH12-18	637	430	1067	260	208	200	251
VDLF12-12+VDH12-18	697	430	1127	260	208	200	253
VDLF12-14+VDH12-18	845	490	1335	330	255	350	324
VDLF12-16+VDH12-18	905	490	1395	330	255	350	324
VDLF12-18+VDH12-18	965	490	1455	330	255	350	326

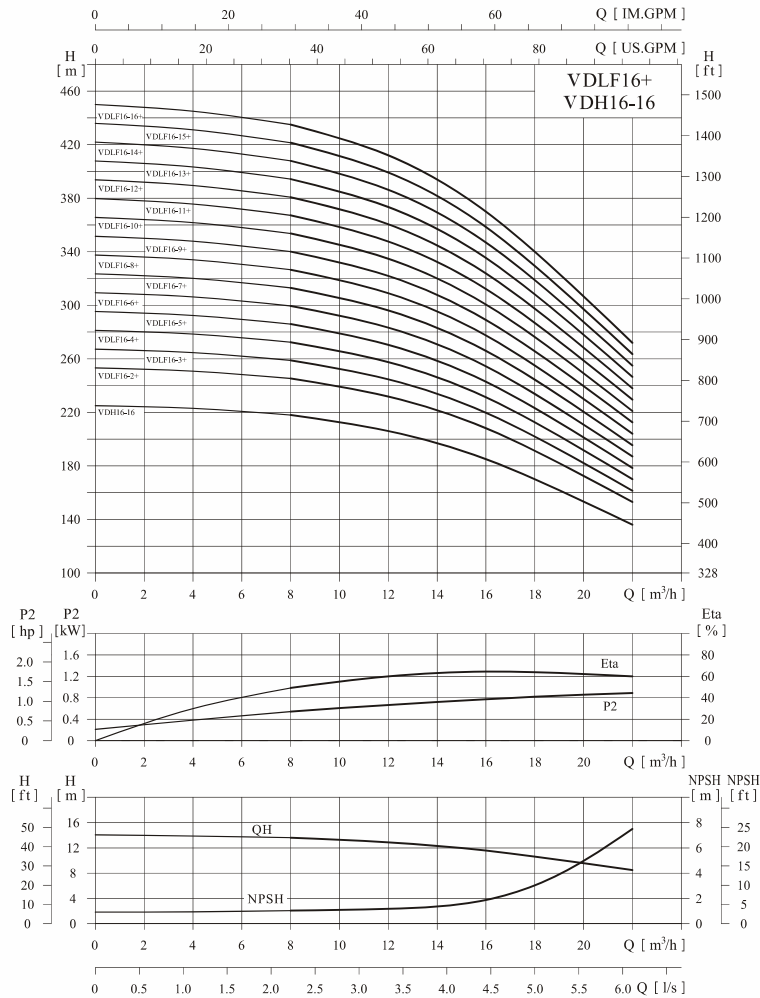


reserves the rights to modify design and technical specifications

VITA PUMPS

Performance curve

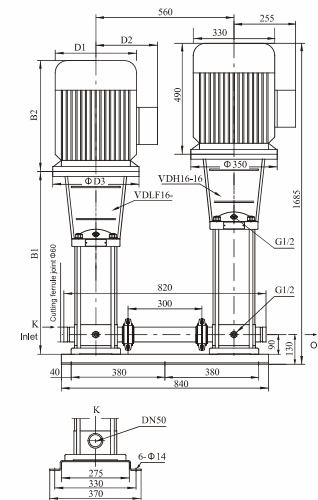
ISO9906 Annex A 2900rpm



Performance table

Model	Driving motor (kW)	Q (m³/h)	8	10	12	14	16	18	20	22
VDLF16-2+VDH16-16	2,2+15	H (m)	243	237	230	220	206	190	172	151
VDLF16-3+VDH16-16	3+15		257	251	243	233	218	201	182	160
VDLF16-4+VDH16-16	4+15		270	264	257	245	230	212	191	169
VDLF 16-5+VDH 16-16	5,5+15		284	278	270	258	242	223	201	178
VDLF 16-6+VDH 16-16	5,5+15		298	291	283	270	254	233	211	187
VDLF 16-7+VDH 16-16	7,5+15		312	306	296	283	266	245	221	196
VDLF 16-8+VDH 16-16	7,5+15		326	319	309	295	278	255	230	205
VDLF 16-10+VDH16-16	11+15		354	347	336	321	302	278	250	222
VDLF 16-12+VDH16-16	11+15		382	373	362	346	325	299	269	240
VDLF 16-14+VDH16-16	15+15		410	401	389	371	350	321	289	257
VDLF 16-16+VDH16-16	15+15		438	428	415	396	373	343	309	275

Installation sketch



Size and weight

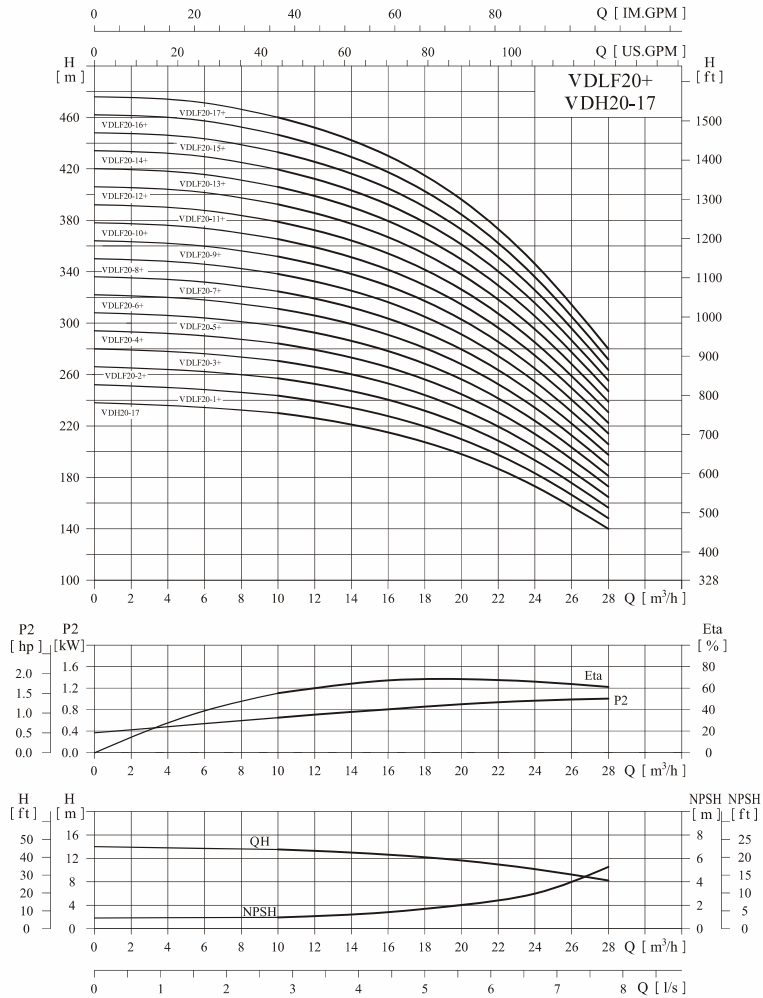
Model	Size (mm)						Weight (kg)
	B1	B2	B1+B2	D1	D2	D3	
VDLF16-2+VDH16-16	397	290	687	190	155	145	231
VDLF16-3+VDH16-16	452	315	767	197	165	160	241
VDLF16-4+VDH16-16	497	335	832	230	188	160	246
VDLF16-5+VDH16-16	562	430	992	260	208	200	261
VDLF16-6+VDH16-16	607	430	1037	260	208	200	266
VDLF16-7+VDH16-16	652	430	1082	260	208	200	271
VDLF16-8+VDH16-16	697	430	1127	260	208	200	271
VDLF16-10+VDH16-16	875	490	1365	330	255	350	331
VDLF16-12+VDH16-16	965	490	1455	330	255	350	336
VDLF16-14+VDH16-16	1055	490	1545	330	255	350	351
VDLF16-16+VDH16-16	1145	490	1635	330	255	350	356



reserves the rights to modify design and technical specifications

Performance curve

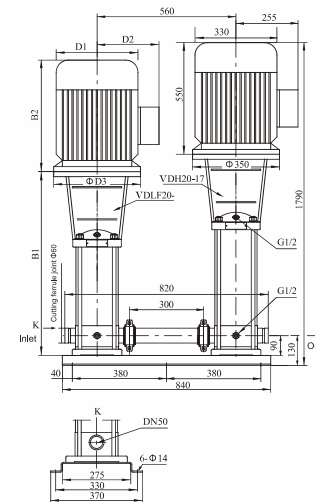
ISO9906 Annex A 2900rpm



Performance table

Model	Driving motor (kW)	Q (m³/h)	10	12	14	16	18	20	22	24	26	28
VDLF20-1+VDH20-17	1.1+18.5	H (m)	241.5	237	232.5	226	217	207	194	180	164	146
VDLF20-2+VDH20-17	2.2+18.5		255	250.5	246	239	230	220	207	192	175	155
VDLF20-3+VDH20-17	4+18.5		268	263.5	259	252	243	232	218	202	184	164
VDLF20-4+VDH20-17	5.5+18.5		282	277	272	265	255	244	229	213	194	173
VDLF20-5+VDH20-17	5.5+18.5		295	290	284	276	266	255	240	222	202	180
VDLF20-6+VDH20-17	7.5+18.5		309	303	297	289	279	267	251	233	212	189
VDLF20-7+VDH20-17	7.5+18.5		323	317	311	303	292	279	262	243	222	198
VDLF20-8+VDH20-17	11+18.5		337	331	325	316	305	291	274	254	232	207
VDLF20-10+VDH20-17	11+18.5		364	358	351	342	330	315	296	275	252	225
VDLF20-12+VDH20-17	15+18.5		392	386	378	368	355	339	318	296	271	242
VDLF20-14+VDH20-17	15+18.5		420	413	405	394	380	363	341	317	290	259
VDLF20-17+VDH20-17	18.5+18.5		462	454	445	433	418	399	375	349	319	285

Installation sketch



Size and weight

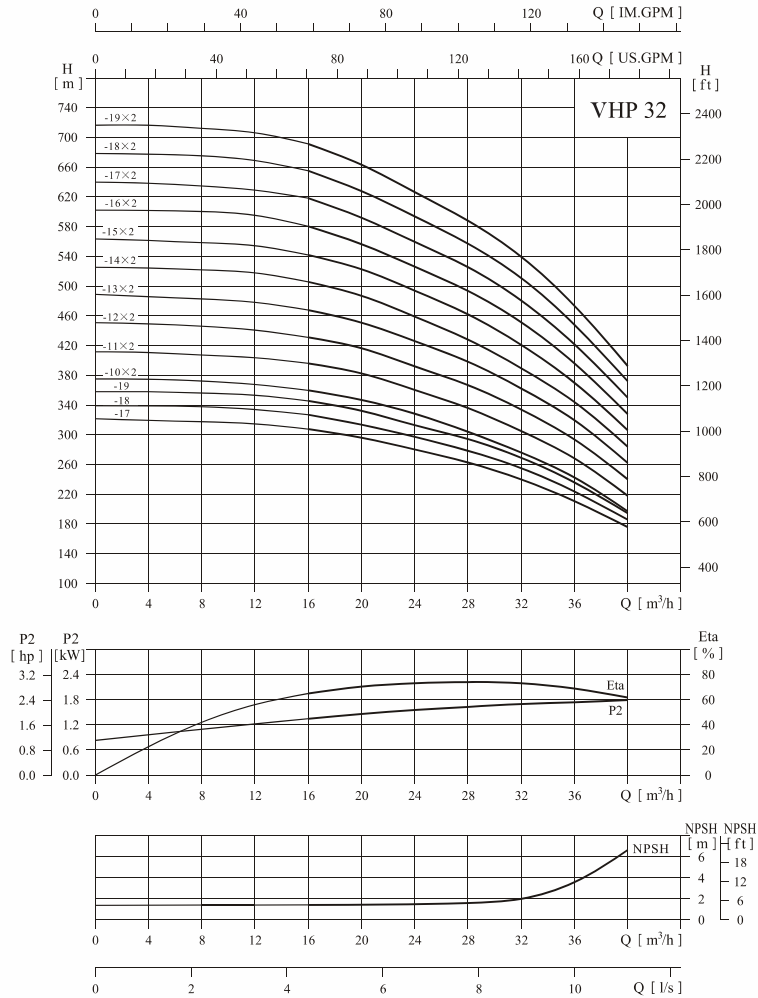
Model	Size (mm)						Weight (kg)
	B1	B2	B1+B2	D1	D2	D3	
VDLF20-1+VDH20-17	387	245	632	170	142	145	244
VDLF20-2+VDH20-17	397	290	687	190	155	145	255
VDLF20-3+VDH20-17	452	335	787	230	188	160	269
VDLF20-4+VDH20-17	517	430	947	260	208	200	284
VDLF20-5+VDH20-17	562	430	992	260	208	200	286
VDLF20-6+VDH20-17	607	430	1037	260	208	200	294
VDLF20-7+VDH20-17	652	430	1082	260	208	200	296
VDLF20-8+VDH20-17	785	490	1275	330	255	350	352
VDLF20-10+VDH20-17	875	490	1365	330	255	350	357
VDLF20-12+VDH20-17	965	490	1455	330	255	350	372
VDLF20-14+VDH20-17	1055	490	1545	330	255	350	377
VDLF20-17+VDH20-17	1190	550	1740	330	255	350	402



reserves the rights to modify design and technical specifications

Performance curve

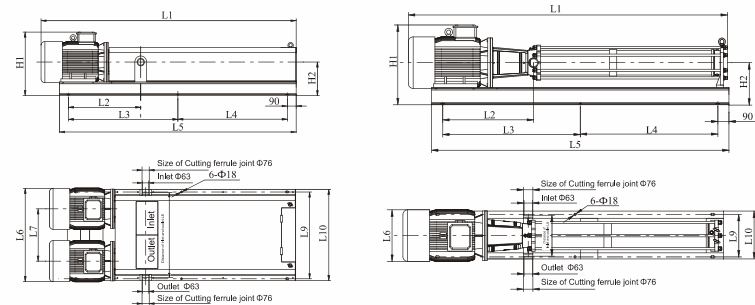
ISO9906 Annex A 2900rpm



Performance table

Model	Driving motor (kW)	Q (m³/h)	16	20	24	28	32	36	40
VHP32-17	37	H (m)	310	295	279	262	240	210	175
VHP32-18	37		328	313	296	278	255	222	186
VHP32-19	37		346	330	312	293	270	235	197
VHP32-10 x 2	18,5 x 2		364	348	329	309	276	247	202
VHP32-11 x 2	22 x 2		401	382	361	339	305	272	220
VHP32-12 x 2	22 x 2		437	417	394	370	334	296	242
VHP32-13 x 2	30 x 2		473	452	427	401	363	321	264
VHP32-14 x 2	30 x 2		510	487	460	432	392	346	287
VHP32-15 x 2	30 x 2		546	521	493	463	422	371	310
VHP32-16 x 2	30 x 2		583	556	526	494	452	395	331
VHP32-17 x 2	37 x 2		619	591	558	525	482	420	352
VHP32-18 x 2	37 x 2		656	626	591	555	512	445	374
VHP32-19 x 2	37 x 2		692	660	624	586	542	469	395

Installation sketch



Size and weight

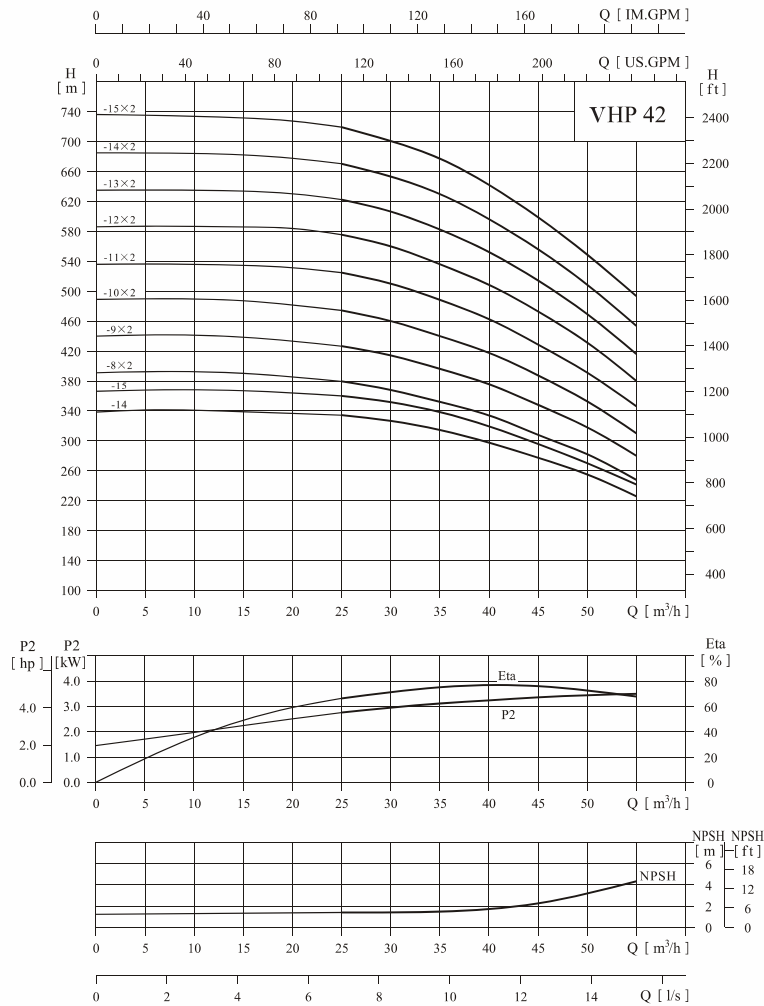
Model	Size (mm)											Weight (kg)	
	L1	L2	L3	L4	L5	L6	L7	L8	L9	L10	H1		H2
VHP32-17	2446	734	1040	1040	2260	420		330	340	385	645	340	485
VHP32-18	2516	734	1075	1075	2330	420		330	340	385	645	340	490
VHP32-19	2586	734	1110	1110	2400	420		330	340	385	645	340	500
VHP32-10 x 2	1856	653	755	755	1689	816	466	796	745	786	550	286	620
VHP32-11 x 2	1956	658	792	792	1764	870	491	821	805	846	575	306	695
VHP32-12 x 2	2026	658	827	827	1834	870	491	821	805	846	575	306	705
VHP32-13 x 2	2166	734	900	900	1980	946	530	860	880	925	645	340	850
VHP32-14 x 2	2236	734	935	935	2050	946	530	860	880	925	645	340	860
VHP32-15 x 2	2306	734	970	970	2120	946	530	860	880	925	645	340	870
VHP32-16 x 2	2376	734	1005	1005	2190	946	530	860	880	925	645	340	880
VHP32-17 x 2	2446	734	1040	1040	2260	946	530	860	880	925	645	340	945
VHP32-18 x 2	2516	734	1075	1075	2330	946	530	860	880	925	645	340	955
VHP32-19 x 2	2586	734	1110	1110	2400	946	530	860	880	925	645	340	965



reserves the rights to modify design and technical specifications

Performance curve

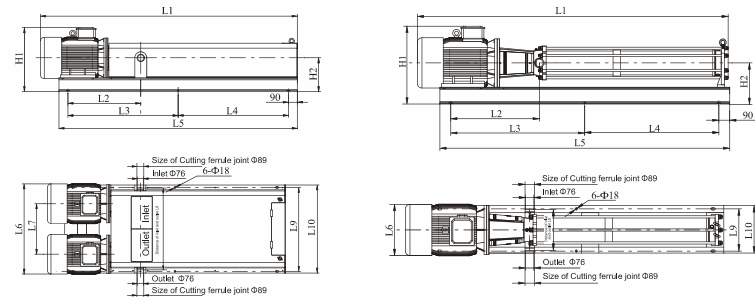
ISO9906 Annex A 2900rpm



Performance table

Model	Driving motor (kW)	Q (m³/h)	25	30	35	40	42	45	50	55
VHP42-14	55	H (m)	336	327	313	298	289	275	253	222
VHP42-15	55		360	350	337	319	310	295	271	241
VHP42-8 x 2	30 x 2		380	373	357	337	324	312	286	252
VHP42-9 x 2	37 x 2		428	416	400	377	366	350	320	282
VHP42-10 x 2	37 x 2		476	461	442	418	408	391	358	317
VHP42-11 x 2	45 x 2		526	513	490	462	450	430	397	348
VHP42-12 x 2	45 x 2		576	560	536	510	494	472	434	380
VHP42-13 x 2	55 x 2		624	607	581	553	536	513	470	412
VHP42-14 x 2	55 x 2		672	652	625	595	578	555	507	443
VHP42-15 x 2	55 x 2		718	697	670	638	620	597	548	475

Installation sketch



Size and weight

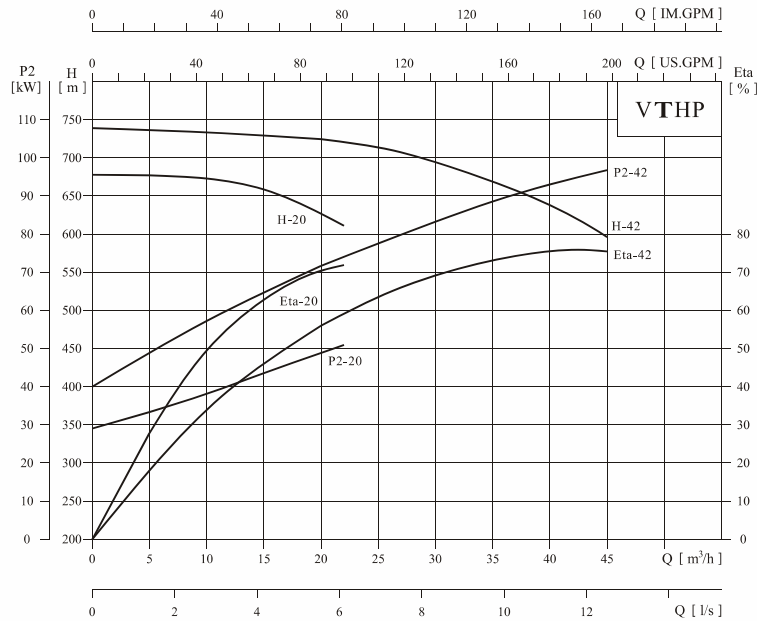
Model	Size (mm)												Weight (kg)
	L1	L2	L3	L4	L5	L6	L7	L8	L9	L10	H1	H2	
VHP42-14	2525	868	1078	1078	2333	510		350	432	477	755	390	660
VHP42-15	2605	868	1118	1118	2413	510		350	432	477	755	390	665
VHP42-8 x 2	1916	744	777	777	1729	946	530	880	880	925	645	340	815
VHP42-9 x 2	1996	744	817	817	1809	946	530	880	880	925	645	340	895
VHP42-10 x 2	2076	744	857	857	1889	946	530	880	880	925	645	340	905
VHP42-11 x 2	2195	771	910	910	1996	1020	570	920	960	1005	700	365	1040
VHP42-12 x 2	2275	771	950	950	2076	1020	570	920	960	1005	700	365	1055
VHP42-13 x 2	2445	868	1038	1038	2253	1130	620	970	1050	1097	755	390	1270
VHP42-14 x 2	2525	868	1078	1078	2333	1130	620	970	1050	1097	755	390	1285
VHP42-15 x 2	2605	868	1118	1118	2413	1130	620	970	1050	1097	755	390	1295



reserves the rights to modify design and technical specifications

Performance curve

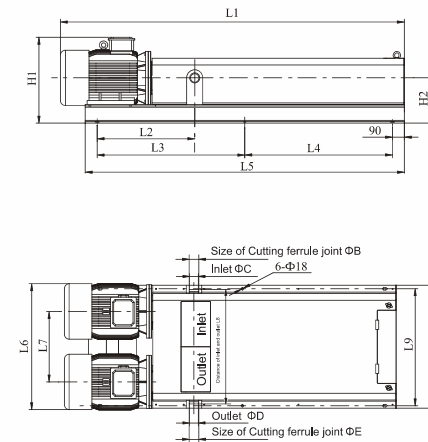
ISO9906 Annex A 2900rpm



Performance table

Model	Driving motor (kW)	Q (m³/h)	5	10	15	20	22	25	30	35	40	42	45
VTHP20-18 x 2	30 x 2	H (m)	678	669	659	626	612						
VTHP42-15 x 2	52 x 2					725	722	718	697	670	638	620	597

Installation sketch



Size and weight

Model	Size (mm)															Weight (kg)	
	L1	L2	L3	L4	L5	L6	L7	L8	L9	L10	H1	H2	B	C	D		E
VTHP20-18 x 2	2516	734	1075	1075	2330	946	530	860	880	925	645	340	76	63	63	76	955
VTHP42-15 x 2	2515	771	1070	1070	2316	1020	570	920	960	1005	700	365	89	76	76	89	1095